

## GCC market performance and activity summary

### GCC fixed income

Global benchmark bond index recorded gains for the week ending 25th November. The Global Aggregate index rose (0.53%) and Global Treasuries also rose (0.48%). In credit, Global corporate IG index and Global HY index both posted gains last week. EM USD bonds posted positive gains over the week, led by EM Asia (0.35%).

GCC bond indices edged higher over the week. Qatar and Kuwait outperformed the most, while Oman ended flat. UAE underperformed the most. 5Y sovereign CDS spreads widened across Bahrain, Saudi Arabia, and Abu Dhabi, but tightened across Dubai, Oman, and Qatar.

### GCC equities

GCC regional indices declined over the week – Saudi Arabia and Qatar recorded the most losses. Overall, MSCI GCC posted declines, and underperformed both MSCI EM and MSCI ACWI.

### GCC key macro developments

- ▶ Dubai approved budget for 2026–2028 with USD82.41bn in expenditures.
- ▶ Bahrain's real GDP to rise 3.3% in 2026- IMF.

### GCC corporate news

- ▶ FAB successfully issued a USD1bn Additional Tier 1 instrument.
- ▶ Ahli Bank has listed its inaugural USD137mn 3-year corporate bond.
- ▶ Nasdaq Dubai listed a SUD500mn Sukuk.

## GCC Weekly Market Performance

Index				Rates			
Fixed Income	Latest	-1w %	YTD %	3M interbank	Latest	-1w (bp)	YTD (bp)
Global Agg	499.0	0.53	7.89	Saudi	4.97	-14.58	-45.04
Global Treasuries	207.7	0.48	6.73	UAE	3.81	1.66	-63.43
EM USD Agg TR	1379.4	0.25	10.44	Kuwait	3.81	0.00	-12.50
EM LatAm TR	1269.4	0.16	12.06	Bahrain	5.19	-3.30	-50.24
EM EMEA TR	406.9	0.27	10.40	Oman	4.45	-	-46.75
EM Asia TR	703.9	0.35	8.41	Qatar	4.10	2.50	-55.00
Bahrain TR	222.7	0.15	9.58	US SOFR	3.96	5.00	-44.00
Oman TR	173.0	0.03	10.61	5Y Sov. CDS	Latest	-1w (bp)	YTD (bp)
Kuwait TR	167.5	0.29	6.76	Saudi Arabia	66.90	0.62	-2.10
Qatar TR	149.6	0.39	8.69	Abu Dhabi	29.30	0.13	14.61
Saudi Arabia TR	154.2	0.23	9.31	Dubai	55.37	-0.79	7.37
UAE TR	155.3	0.11	8.90	Kuwait	54.53	0.1	-20.3
Equity	Latest	-1w %	YTD %	Bahrain	188.37	8.24	-0.10
ADX	9729.6	-0.98	4.71	Oman	73.00	-0.69	29.27
DFM	5802.9	-0.67	12.99	Qatar	29.37	-0.46	14.67
Tadawul	10590.7	-2.84	-11.70	10Y yield	Latest	-1w (bp)	YTD (bp)
DSM	10603.0	-1.34	0.34	Saudi Arabia	4.57	-5.20	-83.30
MSM30	5636.0	0.33	23.24	Abu Dhabi	4.19	0.20	-83.40
BHSE	2037.5	-0.24	2.58	Dubai	3.91	-4.00	-92.00
KWSE	9412.9	0.49	20.26	Bahrain	6.23	-1.50	-73.50
MSCI GCC	725.6	-1.82	-0.08	Oman	4.72	-0.20	-101.90
MSCI EM	1353.8	-0.48	26.41	Qatar	4.18	-5.70	-65.60
MSCI ACWI	991.1	1.42	17.99				

Note: data from 19<sup>th</sup> November 2025 to 25<sup>th</sup> November 2025. Source: Moody's rating, Fitch ratings, Bloomberg, ADCB Asset Management.

**Mohammed Al Hemeiri**

Senior Specialist

Tel: +971 (0) 281 264 50

[mohammed.alhemeiri@adcb.com](mailto:mohammed.alhemeiri@adcb.com)

**Kishore Muktinutalapati**

Head - Investment Strategy

Tel: +971 (0) 281 264 57

[kishore.muktinutalapati@adcb.com](mailto:kishore.muktinutalapati@adcb.com)

Visit [Investment Strategy Webpage](#) to read our other reports

Awarded Best Private Bank UAE &

Middle East | Best for HNW Clients

UAE & Middle East | Best for

Investment Research UAE &

Middle East – Euromoney 2025

## Key developments

### ► **Dubai approved budget for 2026–2028 with USD82.41bn in expenditures**

Dubai has approved a record three-year budget for 2026–2028, with AED302.7bn (USD82.4bn) in spending and AED329.2bn (USD89.6bn) in revenues. The 2026 fiscal plan allocates AED99.5bn in expenditure and AED107.7bn in revenues. Nearly half of 2026 spending 48% will go toward infrastructure such as roads, bridges, and transport, reinforcing Dubai's role as a regional trade, logistics, and tourism hub. (Source: Zawya)

### ► **Bahrain's real GDP to rise 3.3% in 2026- IMF**

According to the IMF, Bahrain's economy grew 2.6% in 2024 amid tight financial conditions, with inflation at 0.9%. However, fiscal pressures intensified, with the deficit widening to 11% of GDP and government debt exceeding 133%. The IMF expects growth to improve to 2.9% in 2025 and 3.3% in 2026, supported by refinery upgrades and strong tourism and financial services. Over the medium term, real GDP is projected to average around 3%, with the non-oil sector accounting for nearly 90% of the economy by 2030. (Source: Zawya).

### ► **FAB successfully issued a USD1bn Additional Tier 1 instrument**

First Abu Dhabi Bank (FAB) has successfully issued a USD1bn Additional Tier 1 (AT1) perpetual non-call 6-year instrument at a fixed rate of 5.875%. The issuance further strengthens FAB's capital base going into 2026 and supports the bank's long-term capital strategy. Pricing was set at 5.875%, more than 50bp tighter than the initial range of 6.375% - 6.500%. This represents the lowest yield for a CEEMEA conventional USD AT1 issuance since May 2021. Investor demand was exceptionally strong, with a high-quality, globally diversified orderbook across Europe, MENA, US, and APAC. Orders peaked above USD3.3bn (3.3x oversubscribed), marking the largest orderbook ever achieved by a UAE bank issuing AT1 capital, and the largest for any GCC AT1 transaction this year. (Source: Zawya).

### ► **Nasdaq Dubai listed a SUD500mn Sukuk**

Nasdaq Dubai has listed a USD500mn Sukuk issued by ICDPS Sukuk Limited and guaranteed by the Islamic Corporation for the Development of the Private Sector (ICD). The A-rated 5-year Reg S Sukuk was priced at 65bp over US Treasuries with a 4.391% profit rate and attracted orders exceeding SUD2bn. The listing brings ICD's total Sukuk outstanding on Nasdaq Dubai to USD1bn. The proceeds will help support private-sector development across member countries. Nasdaq Dubai now hosts USD102bn in listed Sukuk, reinforcing its position as a leading global sukuk marketplace. (Source: Zawya).

### ► **Ahli Bank has listed its inaugural USD137mn 3-year corporate bond**

Ahli Bank has listed its inaugural QAR500mn (USD137mn) 3-year corporate bond on the Qatar Stock Exchange, the first corporate bond to be listed and traded on the QSE. The Reg S senior unsecured note carries a 4.45% coupon and forms part of the bank's USD2bn EMTN programme. (Source: Zawya).

# GCC Weekly Market View

Investment Strategy | November 27, 2025

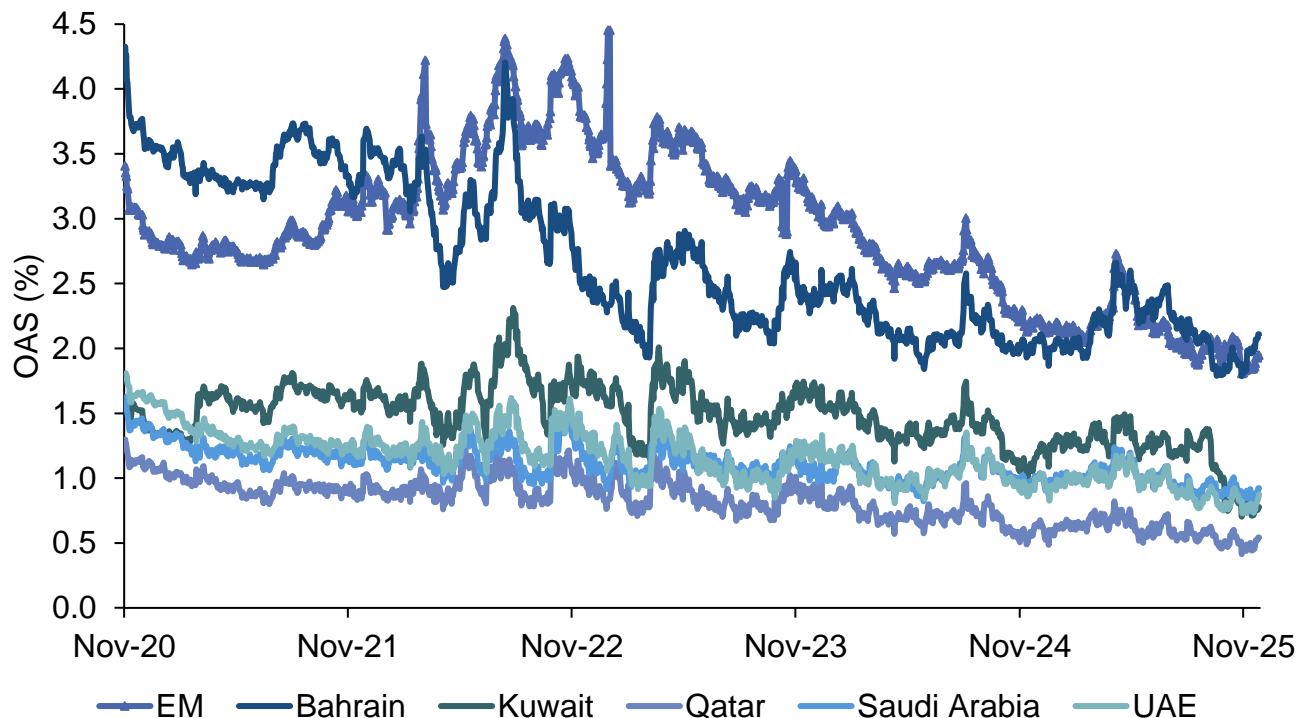
## GCC bond issuances

Issuer	BBG	Sector	Country	Issue Amt*	Cpn	Maturity	Maturity Type	Currency	Issue Date	Rtg^	YTM (mid)	YTC (mid)
Qatar Government International Bond	QATAR	Sovereign	QA	1000	3.625	11/10/2028	AT MATURITY	USD	11/10/2025	AA	3.83	-
Global Sukuk Ventures	QATAR	Sovereign	QA	3000	4.25	11/10/2035	AT MATURITY	USD	11/10/2025	AA	4.32	-
National Bank of Kuwait SAKP	NTBKKK	Financial Institutions	KW	300	5.25	2/10/2036	CALLABLE	USD	11/10/2025	A-	5.23	5.23
Alinma Sukuk Ltd	ALINMA	Financial Institutions	SA	500	5.792	11/10/2035	CALLABLE	USD	11/10/2025	BBB	5.81	5.80
Avilease Capital Ltd	AVILES	Agency	SA	850	4.75	11/12/2030	CALLABLE	USD	11/12/2025	-	4.89	4.89
SIB Sukuk Co III Ltd	SIB	Financial Institutions	AE	500	4.6	11/12/2030	AT MATURITY	USD	11/12/2025	-	4.65	-
Gulf International Bank Saudi Arabia	GULFSA	Financial Institutions	SA	500	6.625		PERP/CALL	USD	11/12/2025	-	6.59	6.71
Ittihad International II Ltd	ITTHAD	Financial Institutions	AE	550	7.375	11/13/2030	CALLABLE	USD	11/13/2025	-	7.14	8.59
QIIB Senior Oryx Ltd	QIIKQD	Financial Institutions	QA	500	4.5	11/13/2030	AT MATURITY	USD	11/13/2025	A	4.50	-
Al Rajhi Sukuk Ltd	RJHIAB	Financial Institutions	SA	250	4.2	11/17/2026	AT MATURITY	USD	11/17/2025	-	4.34	-
BOS Funding Ltd	BOSUH	Financial Institutions	AE	500	4.875	11/19/2030	AT MATURITY	USD	11/19/2025	BBB+	5.18	-
DIB Sukuk Ltd	DIBUH	Financial Institutions	AE	1000	4.572	11/19/2030	AT MATURITY	USD	11/19/2025	A	4.60	-
National Bank of Oman SAOG	NBOBOM	Financial Institutions	OM	450	6.625	-	PERP/CALL	USD	11/19/2025	-	6.61	6.60
MAF Global Securities Ltd	MAFUAE	Financial Institutions	AE	500	5.7477	-	PERP/CALL	USD	11/20/2025	BB+	5.99	5.91
KFH Tier 1 Sukuk 2 Ltd	KFHKK	Financial Institutions	KW	850	6.25	-	PERP/CALL	USD	11/20/2025	-	6.11	6.25
Sharjah Sukuk Program Ltd	SHARSK	Sovereign	AE	750	5.192	5/25/2036	AT MATURITY	USD	11/25/2025	-	5.24	-
QNB Finance Ltd	QNBK	Agency	QA	500	4.6763 271	11/25/2028	AT MATURITY	USD	11/26/2025	-	4.70	-

\*Amount Issued in USD/AEDmillion, Bloomberg sector classification has been used, ^Issuer rating used where applicable, Fitch rating or equivalent used Source: Fitch Ratings, Moody's ratings, Bloomberg, ADCB Asset Management

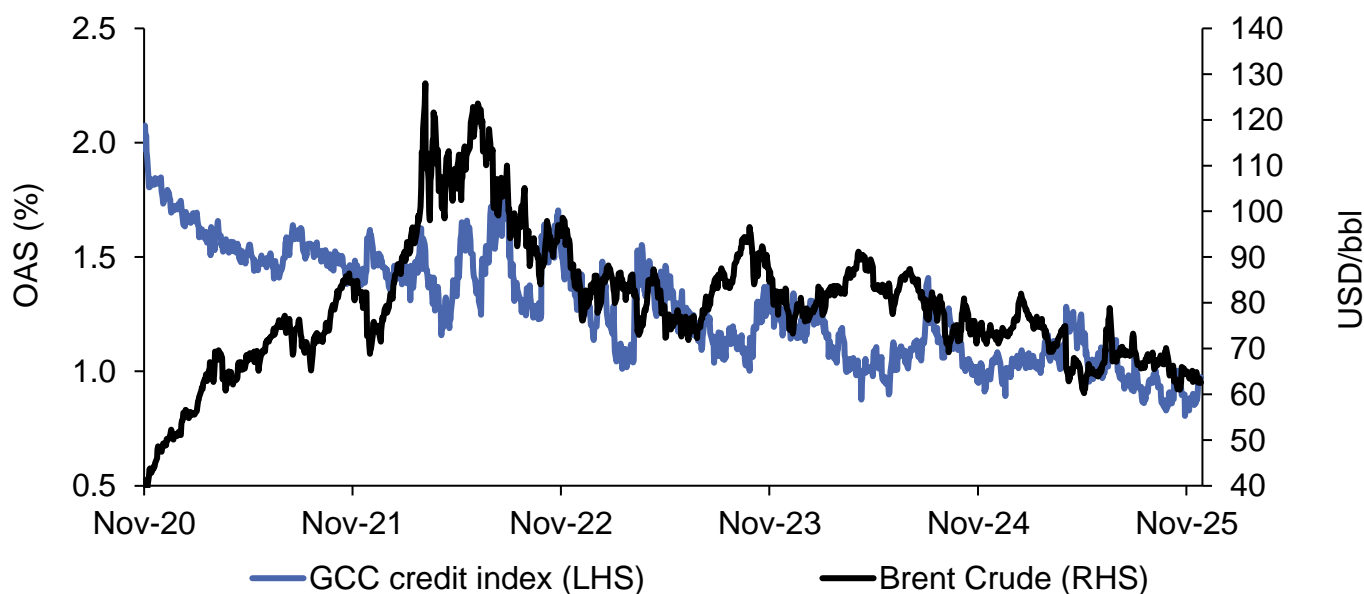
## Appendix

### Bloomberg Barclays Bond Indices OAS spread (EM vs GCC)



Source: Bloomberg Sovereign Bond Indices, ADCB Asset Management

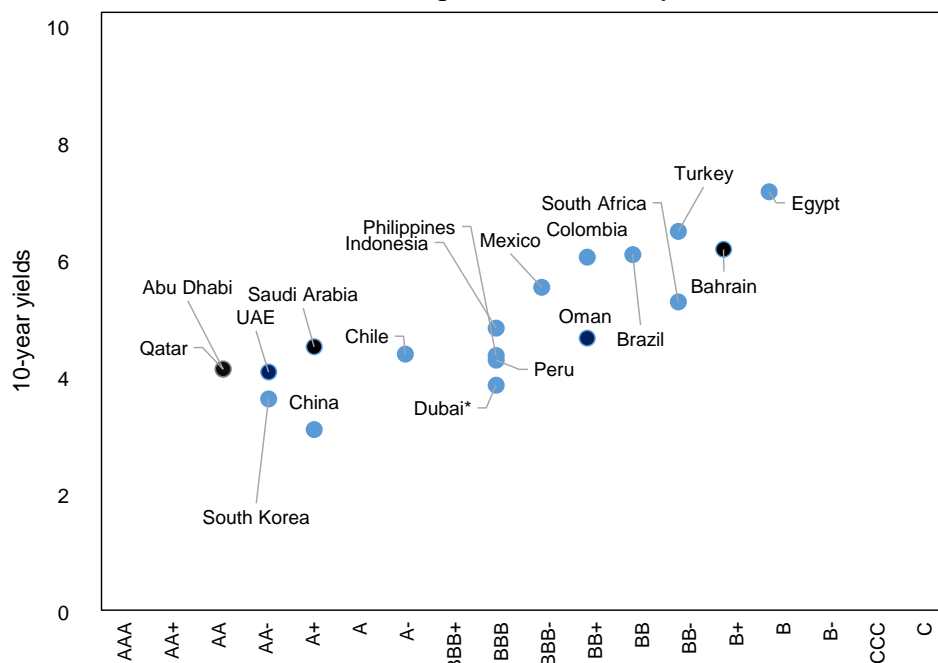
### GCC corporate OAS spread versus Brent Crude



Source: Bloomberg, ADCB Asset Management

## 10yr yield versus Credit ratings (EM vs GCC)

GCC sovereign valuation versus peers



Source: Bloomberg, ADCB Asset Management, \*Dewa rating used as a substitute for Dubai, Fitch ratings are used for all countries

## GCC Sovereign Rating

Country	Saudi Arabia	Abu Dhabi	Dubai*	Kuwait	Bahrain	Oman	Qatar	Egypt
Moody's	Aa3	Aa2	Baa2	A1	B2u	Baa3	Aa2	Caa1
Fitch	A+	AA	-	AA-	B+	BB+	AA	B

Note: \*DEWA rated used as proxy for Dubai

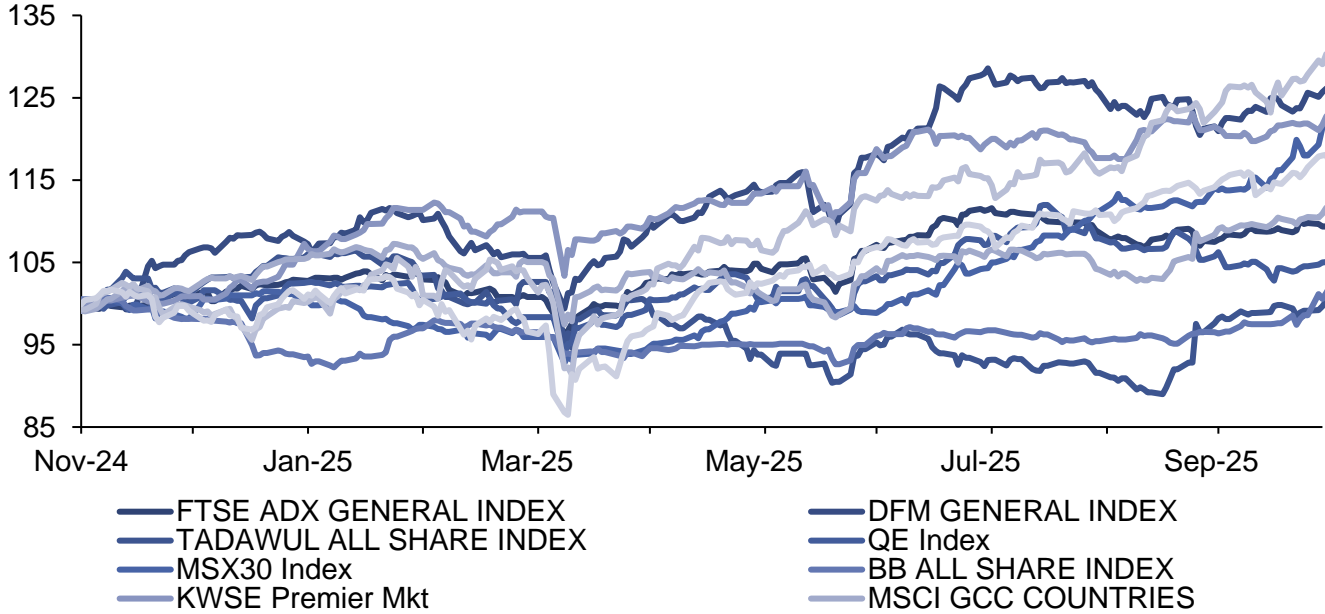
## GCC equities – performance, earnings, and valuations snapshot

Equity Index	12M forward PE	12M forward EPS growth	12M forward dividend yield
ADX	11.9x	33.2%	2.4%
DFM	10.8x	-	4.9%
Tadawul	15.7x	7.7%	3.7%
DSM	12.0x	-3.1%	4.7%
MSM30	10.5x	-	5.5%
BHSE	11.3x	-	9.4%
KWSE	18.6x	-16.0%	3.4%
MSCI GCC	13.1x	12.7%	4.1%
MSCI EM	15.3x	8.3%	2.3%
MSCI ACWI	21.2x	10.5%	1.7%

Notes: \*data as of 27 November 2025 | Source: Bloomberg, ADCB

## GCC equity 1Y Performance

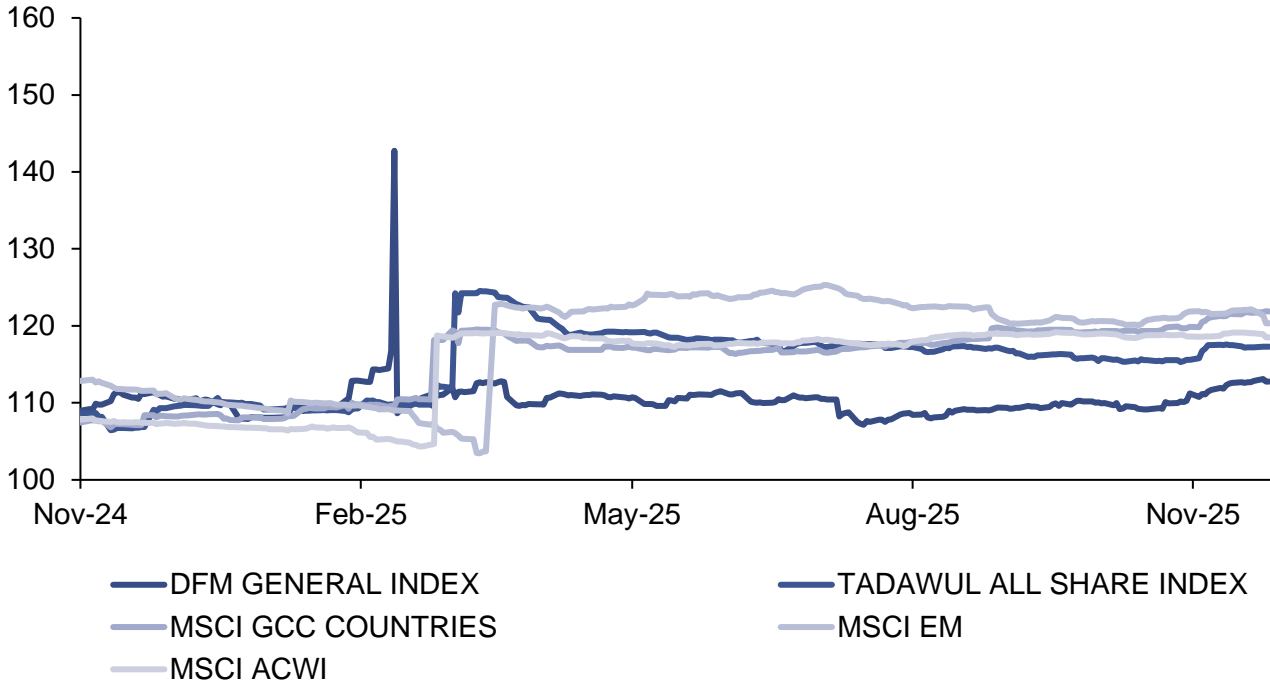
### 1Y performance



Source: Bloomberg, ADCB

## GCC equity 12m forward PE

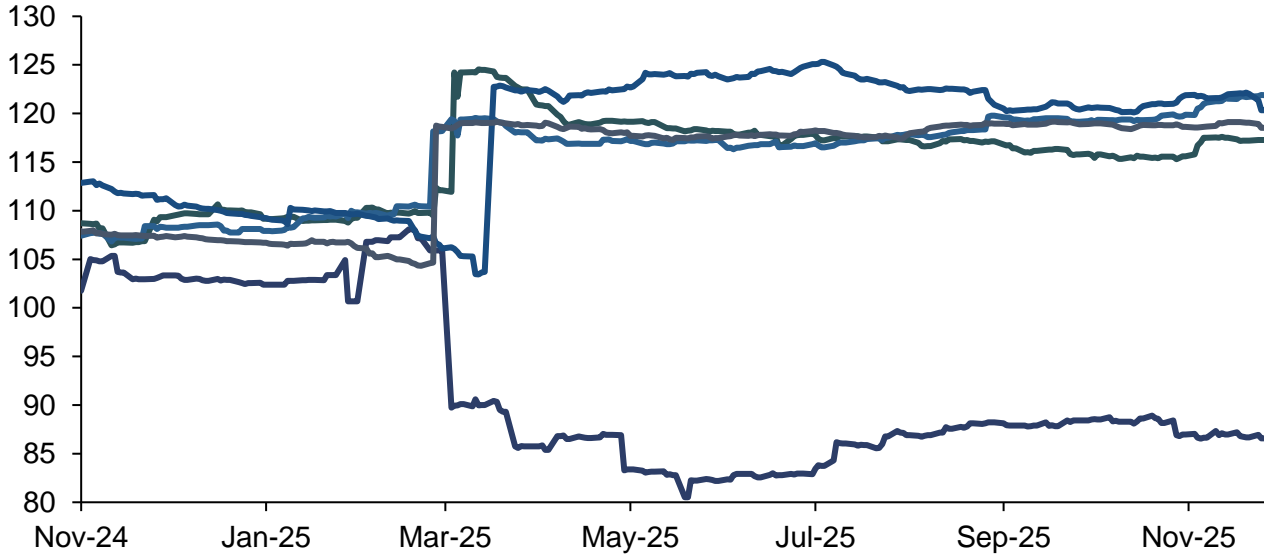
### 12 month forward EPS (indexed to 100 at start)



Source: Bloomberg, ADCB

## GCC equity 12m forward EPS

12 month forward EPS (indexed to 100 at start)

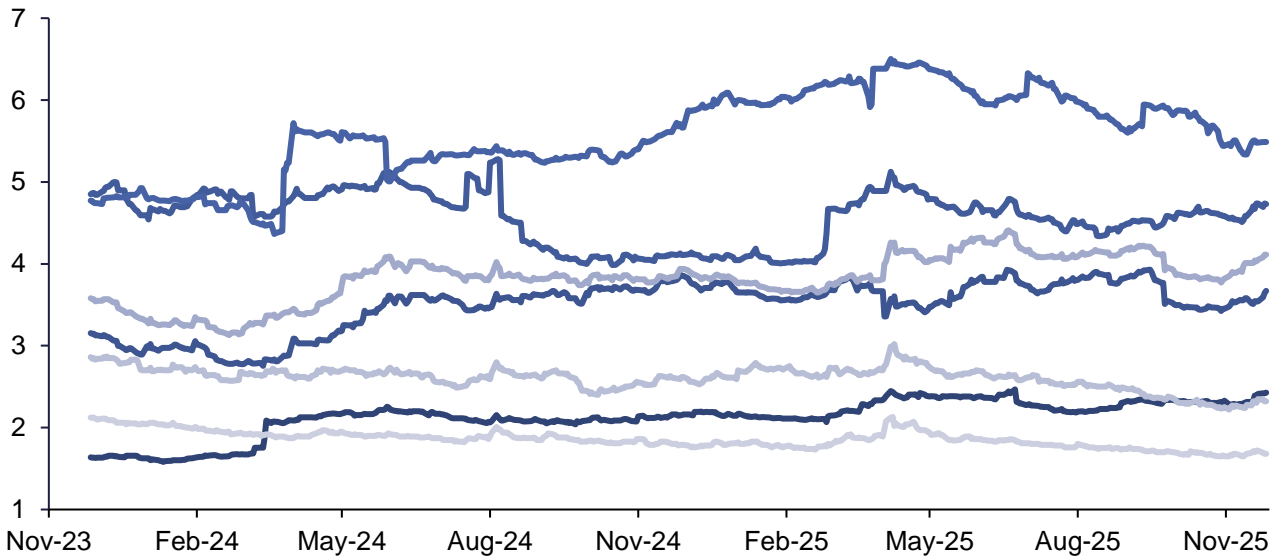


- TADAWUL ALL SHARE INDEX
- MSCI GCC COUNTRIES
- MSCI ACWI
- KWSE Premier Mkt
- MSCI EM

Source: Bloomberg, ADCB

## GCC equity 12m forward dividend yields

12m Forward Dividend Yield



- FTSE ADX GENERAL INDEX
- TADAWUL ALL SHARE INDEX
- QE Index
- MSX30 Index
- MSCI GCC COUNTRIES
- MSCI EM
- MSCI ACWI

Source: Bloomberg, ADCB

## Disclaimer

ADCB Asset Management Limited ("AAML"), is a member of ADCB Group, licensed by Financial Services Regulatory Authority in Abu Dhabi Global Markets under financial services permission number 170036.

This publication is intended for general information purposes only. It should not be construed as an offer, recommendation or solicitation to purchase or dispose of any securities or to enter in any transaction or adopt any hedging, trading or investment strategy. Neither this publication nor anything contained herein shall form the basis of any contract or commitment whatsoever. Distribution of this publication does not oblige ADCB Group to enter into any transaction.

The content of this publication should not be considered as legal, regulatory, credit, tax or accounting advice. Anyone proposing to rely on or use the information contained in the publication should independently verify and check the accuracy, completeness, reliability and suitability of the information and should obtain independent and specific advice from appropriate professionals or experts regarding information contained in this publication. Investment products are not available to US persons.

Information and opinions contained herein is are based on various sources, including but not limited to public information, annual reports and statistical data that AAML considers accurate and reliable. However, AAML makes no representation or warranty as to the accuracy or completeness of any statement made in or in connection with this publication and accepts no responsibility whatsoever for any loss or damage caused by any act or omission taken as a result of the information contained in this publication. This publication is intended for customers who are either retail or professional investors.

Charts, graphs and related data or information provided in this publication are intended to serve for illustrative purposes only. The information contained in this publication is prepared as of a particular date and time and will not reflect subsequent changes in the market or changes in any other factors relevant to their determination. All statements as to future matters are not guaranteed to be accurate. AAML expressly disclaims any obligation to update or revise any forward looking statement to reflect new information, events or circumstances after the date of this publication or to reflect the occurrence of unanticipated events.

ADCB Group does and may at any time solicit or provide commercial banking, investment banking, credit, advisory or other services to the companies covered in its publications. As a result, recipients of this publication should be aware that any or all of foregoing services may at time give rise to a conflict of interest that could affect the objectivity of this publication. Opinions expressed herein may differ from opinions expressed by other businesses or affiliates of ADCB Group.

Past performance does not guarantee future results. Investment products are not bank deposits and are not guaranteed by ADCB Group. They are subject to investment risk, including possible of loss of principal amount invested. This publication may not be reproduced or circulated without ADCB Group written authority. The manner of circulation and distribution may be restricted by law or regulation in certain jurisdictions. Persons who come into possession of this document are required to inform themselves of, and to observe such restrictions. Any unauthorized use, duplication, or disclosure of this document is prohibited by law and may result in prosecution.